

A photograph of a brown sofa with a patterned cushion and tassels. The cushion features a geometric pattern in shades of green, beige, and red, with three large tassels hanging from it. The sofa is set against a dark background, and a colorful floral rug is visible in the foreground.

VIV  WORLD

TRADE COLLECTION

LAYERED.
COLLECTED.
MEANINGFUL.

VIV is a curated home and lifestyle space rooted in artisan craftsmanship, global textiles, and meaningful design. We source small-batch goods that bring warmth, story, and texture into the spaces you create.

WHAT WE OFFER

Global & Artisan Textiles

- Handwoven pillows
- Suzani & heritage textiles
- Vintage & one-of-a-kind pieces
- Custom textile sourcing upon request

Bedding & Soft Layers

- Linen & natural fiber bedding
- Textural throws
- Layering accents for styled beds

Tabletop & Gatherings

- Handcrafted ceramics
- Textural linens
- Elevated everyday serving pieces

Local Artist Collaboration

- Rotating Colorado-based makers
- Commissionable pieces
- Exclusive small-batch collections
- Custom art sourcing for projects

DESIGNED FOR DESIGNERS

Trade pricing for approved partners
Personalized sourcing support
In-store styling appointments
Flexible quantities for layered installs
Access to one-of-a-kind inventory
Project holds upon request

We are here to collaborate — not just supply.

THE VIV DIFFERENCE

We prioritize craftsmanship over trend cycles.
We value heritage techniques and natural materials.

We partner with artisans and local makers.
We believe meaningful spaces are layered slowly and intentionally.

VIV offers designers access to pieces that feel collected, not manufactured.

HOW WE SUPPORT YOUR PROJECTS

Residential

- Statement textiles
- Bedroom layering
- Artful finishing details
- Collected tabletop elements

Seasonal Installations & Styling

- Window displays
- Holiday tablescapes
- Pop-up environments
- Event sourcing

Boutique Hospitality

- Guest room textiles
- Lounge layering
- Small-batch table accents
- Locally inspired design touches

Custom Sourcing & Special Projects

- Textile procurement
- Vintage textile acquisition
- Bulk pillow production from select fabrics
- Artist commissions

We work closely with designers to secure meaningful pieces that elevate and complete your vision.

APPLY FOR TRADE ACCESS

To apply for trade pricing or schedule a sourcing consultation:

hello@vivhomegoods.com

We look forward to collaborating with you.

Contents

1 - OUR STORY

5 - SUZANIS

24 - SUZANI PILLOWS

29 - THE RUG COLLECTION

38 - BESPOKE SILK-VELVET YARDAGE

57 - SILK YARDAGE

93 - STACKED ORGANIC, COSTA NOVA

100 - MARRAKESH COLLECTION, COSTA NOVA

105 - POTERIE COLLECTION, COSTA NOVA

110 - LUXURY BEDDING, AMITY HOME

125 - DECORATIVE PILLOWS, AMITY HOME

146 - RE:LOOM COLLECTION, AMITY HOME

151 - THROWS COLLECTION, AMITY HOME

158 - PILLOWCASE COLLECTION, AMITY HOME

173 - CONTACT US

FEAR
EATS
THE
SOUL

Our Story

VIV WORLD WAS FOUNDED ON A BELIEF THAT THE OBJECTS WE LIVE WITH SHOULD CARRY MEANING—OF PLACE, OF CRAFT, OF INTENTION.



We curate timeless home goods and textiles rooted in heritage techniques, sustainable practices, and a deep respect for the hands that make them. Each piece is chosen not for trends, but for longevity—designed to live beautifully in spaces that value restraint, warmth, and authenticity.

VIV exists at the intersection of global craftsmanship and modern living, offering designers objects that tell quiet, lasting stories.



UZBEKISTAN: WOVEN IN LIGHT

A VIV JOURNEY ALONG THE SILK ROAD



SILK

THREADS THAT CARRY STORIES ACROSS CENTURIES

Uzbekistan felt like a place just waiting for me to find.

Along the ancient Silk Road, where merchants once carried bolts of handwoven silk across deserts and mountains, I found a world that still honors beauty as something sacred. In Samarkand and Bukhara, the air moves softly through tiled courtyards and archways painted in impossible blues, as if time itself has learned to slow down here.

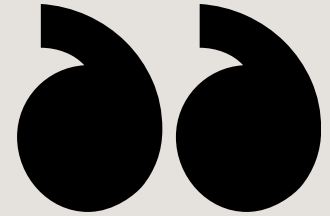
And everywhere, textiles.

Silks dyed in pomegranate and indigo. Ikat patterns that shimmered as I walked. Embroidered suzani blouses blooming with wild flowers and ancient symbols. Even the simplest café was softened by cushions made from handwoven cloth. Nothing felt disposable. Every piece held a story, a hand, a heritage.

One afternoon, I watched a woman quietly embroider silk in a sunlit courtyard. Her slow, patient stitching felt like the truest art of all. Three thousand years of craftsmanship lived in her hands.



TELL ME A STORY...



Traveling through Uzbekistan felt less like visiting a destination and more like entering a story that had never stopped being written. The peace I felt there came from knowing that beauty is not a moment—it's a continuum. In the textiles, in the tiled domes, in the quiet courtyards filled with light and art, I could sense three thousand years of human creativity still breathing, still weaving itself forward.



This is why we strive to do what we do at VIV.

Not trends, but traditions. Not perfection, but soul. Each textile, candle, ceramic, and object we curate carries the same spirit I felt in Uzbekistan: a belief that everyday living can be beautiful, meaningful, and deeply human.

Some places don't just inspire you.
They remind you who you are.

Suzanis

TIMELESS TEXTILES, HAND-STITCHED WITH MOTIFS OF ABUNDANCE, UNITY, AND RENEWAL. EVERY THREAD REFLECTS CENTURIES OF TRADITION AND THE QUIET ARTISTRY OF THE HUMAN HAND.



Blossom Veil Suzani



PRIVATE COLLECTION

Softly layered with flowering medallions and vine-like tendrils, this suzani unfolds as a tapestry of renewal and gentle protection, its central bloom radiating harmony, feminine vitality, and the enduring beauty of life in motion.



Ivory River Suzani



\$3,200

Weaving together floral rosettes and flowing paisley motifs—symbols of vitality, fertility, and protection—set against a softly striated ground that evokes movement and continuity.

42 x 60 inches



Golden Cypress Suzani



\$3,200

Rich with floral medallions and paisley forms, this suzani tells a story of growth, renewal, and blessing—motifs long associated with prosperity, protection, and feminine creative power.

44 X 72 IN



Ember Garden Suzani



\$3,800

Alive with jewel-toned florals and cascading paisley forms, this suzani evokes a garden at dusk—its radiant central field symbolizing vitality and transformation, while layered borders and rhythmic embroidery offer protection, abundance, and enduring warmth to the home.

44 X 70 IN



Crowned Flame Suzani



\$3,200

Set with rhythmic floral forms and crown-like motifs, this suzani symbolizes protection, vitality, and sovereign feminine strength, its repeating pattern and luminous embroidery creating a sense of order, abundance, and quiet power within the home.

48 x 72 inches





Autumn Reverie Suzani



\$3,200

Woven with jewel-toned medallions and delicate vinework upon a warm, earthen ground, this suzani evokes a sense of gathered abundance and quiet reflection, offering balance, continuity, and timeless beauty to the home.

49 x 66 inches

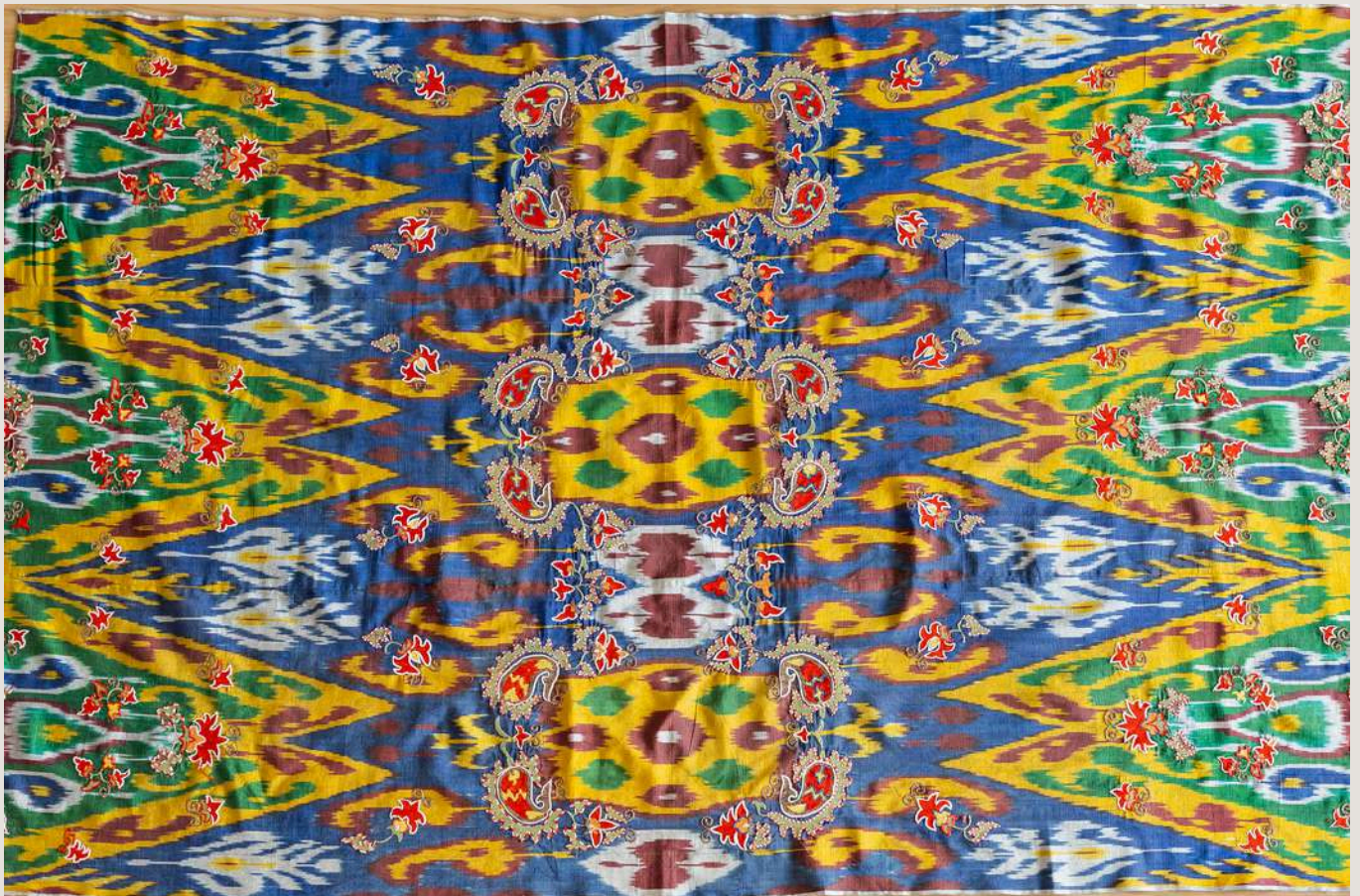


Celestial Current Suzani



\$3,200

With mirrored paisley forms and vibrant ikat-inspired currents flowing across the field, this suzani symbolizes balance, protection, and cosmic movement, offering a dynamic yet harmonizing presence that enlivens the home with rhythm and intention.



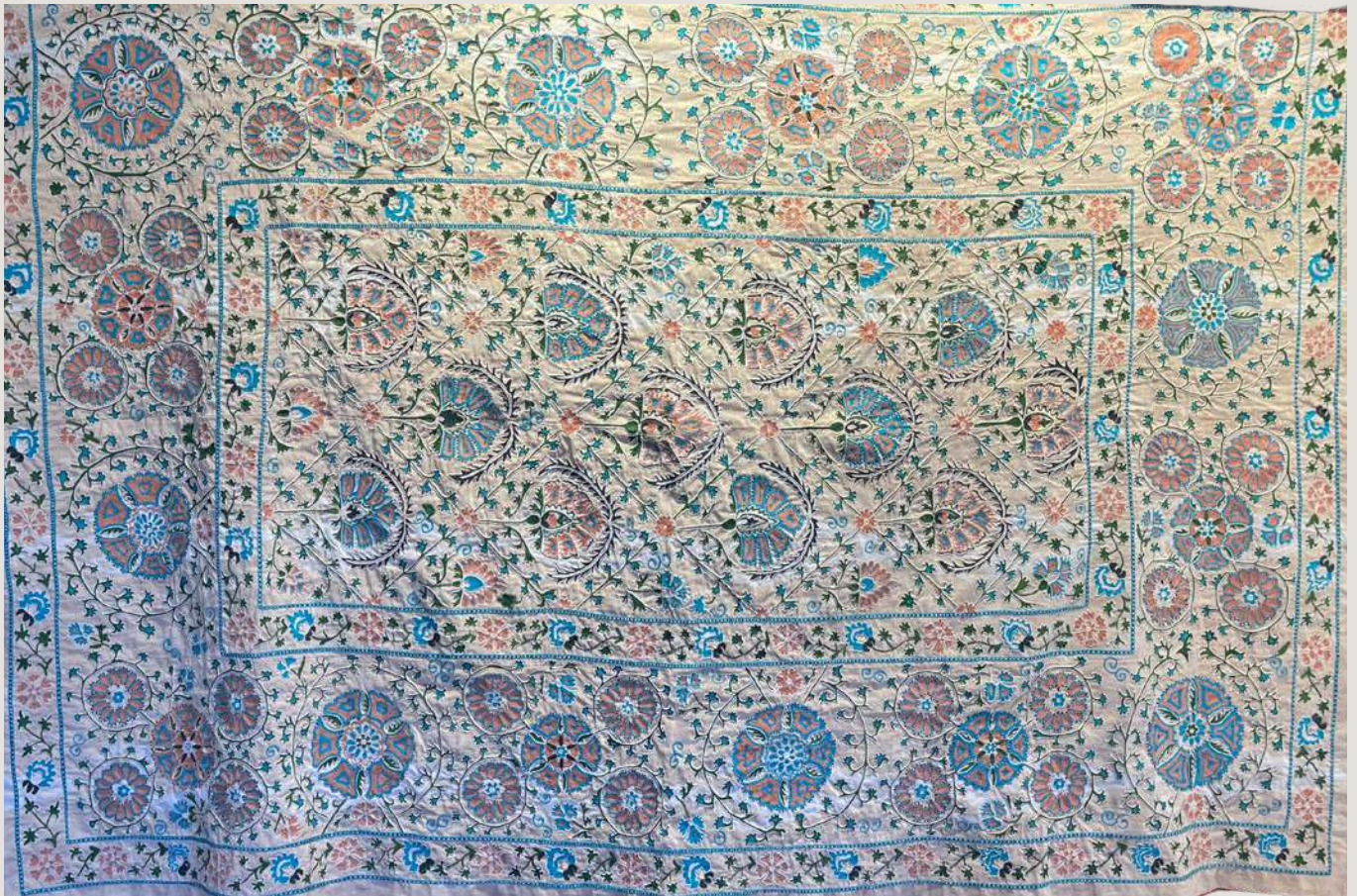
Quiet Blessings



\$4,200

Featuring intricate floral medallions and flowing vine motifs in soft turquoise, coral, and sage. Set against a light, neutral ground, this piece balances symmetry and movement—bringing a sense of calm elegance and storied craftsmanship to any space.

75 x 51 inches



Pomegranate Lattice Suzani



\$3,200

Set against a soft ivory ground, this suzani is alive with pomegranates, paisleys, and rosettes arranged in a rhythmic diamond lattice. The palette of rust, teal, and sage feels balanced and celebratory, carrying a sense of abundance, continuity, and quiet joy.

62 x 45 inches



Magenta Current Suzani



\$1,800

Bold magenta ikat flames ripple across a deep ground, punctuated by floral and paisley motifs that feel alive with movement and energy. The piece carries a sense of vitality and confidence—dramatic, expressive, and unmistakably modern while rooted in tradition.

80 x 26 inches



Crimson Hearth Suzani



\$3,200

This suzani glows with deep crimson and jewel tones, centered by a radiant medallion that feels both protective and celebratory. Flowing floral and vine motifs in sapphire, saffron, and jade create a warm, hearth-like presence that feels alive and grounding.

40.5 x 57.5 inches



Crimson Garden Suzani



\$3,200

A vibrant crimson field blooms with rounded floral medallions and winding vines in soft peach, indigo, and saffron, creating a sense of warmth, abundance, and quiet celebration. This richly embroidered textile feels both joyful and grounding, like a garden held in full, timeless bloom.

40 x 57 inches



Tree of Life Suzani



\$4,200

This suzani unfolds like a living tree, layered in lush greens and animated by birds, blossoms, and winding vines. Its intricate embroidery carries a sense of abundance and harmony—vibrant, story-rich, and quietly enchanting.

60 x 71 inches



Flamevine Suzani



\$3,200

Set on a luminous ivory ground, this suzani is animated by flame-hued florals and curling vines in shades of ember, coral, and soft sage. The composition feels airy yet abundant, evoking movement, vitality, and a quiet sense of celebration woven into every stitch.

40 x 75 inches



Midnight Pomegranate Suzani



\$4,200

Set against a deep, inky ground, this suzani is alive with jewel-toned pomegranate and paisley forms, symbols of abundance, vitality, and protection. The rhythmic repetition and luminous embroidery give it a rich, ceremonial presence—bold, grounding, and quietly powerful.

60 x 74 inches



Marigold Mandala Suzani



\$3,800

Radiating from a luminous central rosette, this suzani blooms with layered florals and vinework in jewel tones against a warm marigold ground, evoking joy, vitality, and abundance. Its circular composition creates a meditative, sun-like presence —uplifting, celebratory, and full of life.

58 x 55 inches



Nocturne Bloom Suzani



\$4,200

Set against a deep black ground, this suzani comes alive with swirling florals and paisley forms in vibrant jewel tones, creating a sense of movement and quiet magic. The luminous embroidery feels like a garden at dusk—rich, layered, and softly enchanting.

51 x 80 inches



Suzani Pillows

HAND-EMBROIDERED IN THE SUZANI TRADITION, THESE PILLOWS BRING TOGETHER VIBRANT COLOR, SYMBOLIC MOTIFS, AND ARTISAN CRAFTSMANSHIP, OFFERING A JOYFUL YET REFINED EXPRESSION OF HERITAGE DESIGN FOR MODERN LIVING.



Suzani Pillows



SOLAR BLOOM
SUZANI PILLOW

#342679
\$350



SACRED FLAME
TULIP SUZANI
PILLOW

#342768
\$300



BLESSING BLOOM
SUZANI PILLOW

#342680
\$300



LOTUS SUN
SUZANI PILLOW

#342781
\$300



GOLDEN GARDEN
SUZANI PILLOW

#342671
\$300



RADIANT PAISLEY
GARDEN SUZANI
PILLOW

#342783
\$300



ABUNDANT
SONGBIRD
SUZANI PILLOW

#342659
\$350



SCARLET GARDEN
SUZANI PILLOW

#342769
\$350



Suzani Pillows



CRIMSON
SUNBURST
SUZANI PILLOW

#342679

\$350



FOREST ROSETTE
SUZANI PILLOW

#342768

\$300



MIDNIGHT
LATTICE SUZANI
PILLOW

#342680

\$300



POMEGRANATE
MOON SUZANI
PILLOW

#342781

\$300



VERDANT FLAME
SUZANI PILLOW

#342671

\$300



EVERGREEN
GARDEN SUZANI
PILLOW

#342783

\$300



COBALT HARVEST
SUZANI PILLOW

#342659

\$350



HEAVENLY FLAME
PAISLEY SUZANI
PILLOW

#342769

\$350



The Rug Collection

HANDWOVEN IN UZBEKISTAN WITH NATURAL DYES, THESE RUGS REFLECT CENTURIES OF ARTISTRY, OFFERING TIMELESS DESIGN ROOTED IN CULTURAL TRADITION AND MATERIAL INTEGRITY.



Indigo Blossom Rug



\$6,500

Each medallion in this Uzbek rug acts as a blessing, repeated like a mantra across the field, creating a feeling of protection, harmony, and continuity. The deep blues and softened reds feel both anchoring and alive, offering a sense of sanctuary—an object meant not only to be walked upon, but to be lived with.





Golden Garden of Balance Rug



\$18,500

Woven in luminous golden tones, this rug unfolds like a ceremonial garden—layered with floral medallions, celestial scrollwork, and flowing vines that symbolize harmony, abundance, and continuity. Its balanced composition invites warmth and vitality into a space, grounding the home while quietly radiating joy and prosperity.





Garden of Still Waters



\$18,500

Woven in soft mineral blues and gentle earth tones, this rug evokes a tranquil garden nourished by flowing water—an ancient symbol of life, clarity, and renewal. Delicate floral motifs and meandering vines create a calming rhythm, offering a sense of balance, openness, and quiet luxury to the space.





Hearthstone Wool Rug



\$3,000

With its thick, undyed wool and organic tonal variations, this rug embodies warmth, protection, and primal comfort—echoing the ancient role of the hearth as the heart of the home. Its plush, cloud-like texture invites rest and grounding, creating a sanctuary of softness that feels both ancestral and quietly luxurious.



Bug in a Rug



\$1,650.00

Handwoven from wool and naturally dyed using cochineal insects, these rugs embody the quiet alchemy of traditional craft—where color, time, and intention converge. Crafted by a small family of Zapotec master weavers in Oaxaca, Mexico, led by patriarch Isaac Vasquez, each piece carries generations of knowledge and reverence for natural materials, transforming the smallest of living elements into enduring beauty for the home.





Bespoke Silk-Velvet Yardage

EXQUISITELY HANDWOVEN SILK YARDAGE
SHOWCASING ELABORATE COLORS, STORIES, AND
HISTORIC MOTIFS, DESIGNED TO BE
TRANSFORMED INTO CUSTOM PILLOWS,
THROWS, WALL PANELS, AND OTHER REFINED
HOMETEXTILES.

Garden of Radiance

PER YARD: \$225.00
UZSV-001. 11 Y
22 INCHES WIDE

This textile features repeating medallion motifs framed by flowing, wave-like forms—symbols of harmony, protection, and abundance—rendered in saturated jewel tones of marigold, indigo, crimson, and verdant green. The velvet-like pile catches the light with subtle movement, creating a sensorial surface that invite warmth and vitality into a space.



Crimson Heart Medallion

PER YARD: \$225.00

UZSV-002. 7.5 Y

21 INCHES WIDE

Anchored by bold medallions in deep crimson and indigo, this silk textile radiates a sense of vitality and reverence, with golden accents pulsing like embers at its core. The plush, velvety surface enhances the richness of the colors, creating a tactile experience that feels grounding yet celebratory—an expressive balance of strength, protection, and quiet opulence woven into every thread.



Midnight Ember

PER YARD: \$225.00

UZSV-003. 11 Y

19.5 INCHES WIDE

Set against an inky black ground, this silk textile glows with warm ember-red and softened ivory motifs that drift like symbols emerging from shadow. The flowing, almost calligraphic forms create a sense of movement and introspection, while the dense, velvety pile lends a tactile richness that feels intimate, enveloping, and deeply atmospheric—luxurious in a way that is restrained, moody, and soulful.



Ember Rhythm

PER YARD: \$225.00

UZSV-004. 10 Y

21 INCHES WIDE

Saturated in glowing hues of flame-orange, magenta, and deep indigo, this silk textile pulses with rhythmic, totemic motifs that feel both ancient and alive. The high-pile, velvet-like texture amplifies the intensity of the color, creating a surface that shimmers with energy and warmth—playful yet powerful, expressive yet grounded, and unmistakably alive with creative spirit.



Garden of Ancestral Fire

PER YARD: \$225.00

UZSV-005. 11 Y

16 INCHES WIDE

Woven in a harmonious balance of softened neutrals and jewel-toned accents, this textile carries botanical and flame-like motifs that evoke growth, protection, and continuity. Mossy greens, ember reds, muted golds, and ash blues emerge from a warm stone ground, while the velvety silk pile gives the surface a lived-in richness—grounded, storied, and gently luminous, as if holding memory and ritual within its threads.



Stillwater Geometry

PER YARD: \$225.00

UZSV-006. 11 Y

16 INCHES WIDE

Soft teal and mineral blue motifs are framed by deep charcoal and warm sand tones, forming a layered diamond structure that suggests balance, protection, and inward focus. The silk pile catches light with a subtle sheen, giving the surface a fluid, almost water-worn quality—calm yet intentional—while the repeating forms create a grounding rhythm that feels meditative, composed, and enduring.



Crimson Axis

PER YARD: \$225.00

UZSV-007. 11 Y

15 INCHES WIDE

Anchored by a vivid crimson vertical form, this design feels charged and intentional, like a pulse running through a field of shadow and stone. Soft slate blues and warm parchment tones are held within sweeping black contours, giving the silk surface a sense of protection, gravity, and quiet drama. The texture is plush and light-catching, creating a tactile experience that feels both powerful and contemplative—ancient in spirit, strikingly modern in mood.



Water Wells

PER YARD: \$225.00

UZSV-008. 9.5 Y

15 INCHES WIDE

Soft steel-blue forms rest within deep black contours, cradled by warm, sand-gold tones that give the surface a sense of weight and calm. The repeated, vessel-like motifs feel protective and inward-facing, evoking themes of holding, gathering, and quiet abundance. The silk's velvety pile catches light subtly, creating a tactile richness that feels steady, composed, and deeply grounding—luxurious without excess, meditative without austerity.



Ashfall Quiet

PER YARD: \$200.00

UZSV-009. 10.5 Y

15 INCHES WIDE

A study in restraint and depth, this piece moves through soft gradients of charcoal, smoke, and weathered graphite, its surface marked by subtle striations that feel almost like brushed stone or wind-swept ash. The texture is velvety yet raw, absorbing light rather than reflecting it, creating a calm, contemplative presence that feels grounding, introspective, and quietly powerful—an atmosphere more than a pattern.



Golden Totems at Dusk

PER YARD: \$225.00

UZSV-010. 12 Y

16 INCHES WIDE

Bold and ceremonial, this design carries a rhythmic presence—golden forms rising like totems against a deep, night-toned ground, accented by crimson, jade, and ivory. The velvety texture softens the geometry, giving the motifs a glowing, almost ritual quality, as if illuminated from within, evoking strength, continuity, and a quiet reverence that feels both ancient and alive.



Ember Medallion

PER YARD: \$225.00

UZSV-011. 10.5 Y

16 INCHES WIDE

Grounded in deep indigo and softened gold, this piece centers on a glowing ember-like motif that feels held within layers of time and movement. Scrolling forms ripple outward with a sense of quiet symmetry, while the plush, velvety surface gives the design a warmth and depth that feels intimate, protective, and gently luminous—like an inner fire steadied by tradition.



Candelabra Reverie

PER YARD: \$225.00

UZSV-012. 14+ Y

15 INCHES WIDE

Rich with contrast and quiet drama, this textile layers inky blacks, burnished golds, and wine-red accents in a rhythm that feels ceremonial and contemplative. The repeating, candle-like forms and architectural motifs evoke a sense of guardianship and ritual, while the dense, velvety pile lends a moody softness—grounded, intimate, and evocative of evening light held in stillness.



Amethyst Echo

PER YARD: \$225.00

UZSV-013. 5 Y

15.5 INCHES WIDE

Vivid magenta-violet motifs bloom against a soft ivory ground, creating a piece that feels both regal and intimate. The symmetrical, flowing forms suggest balance and reflection, while the plush, velvety texture catches light with a gentle sheen—sensual, uplifting, and quietly powerful, like warmth radiating from within.



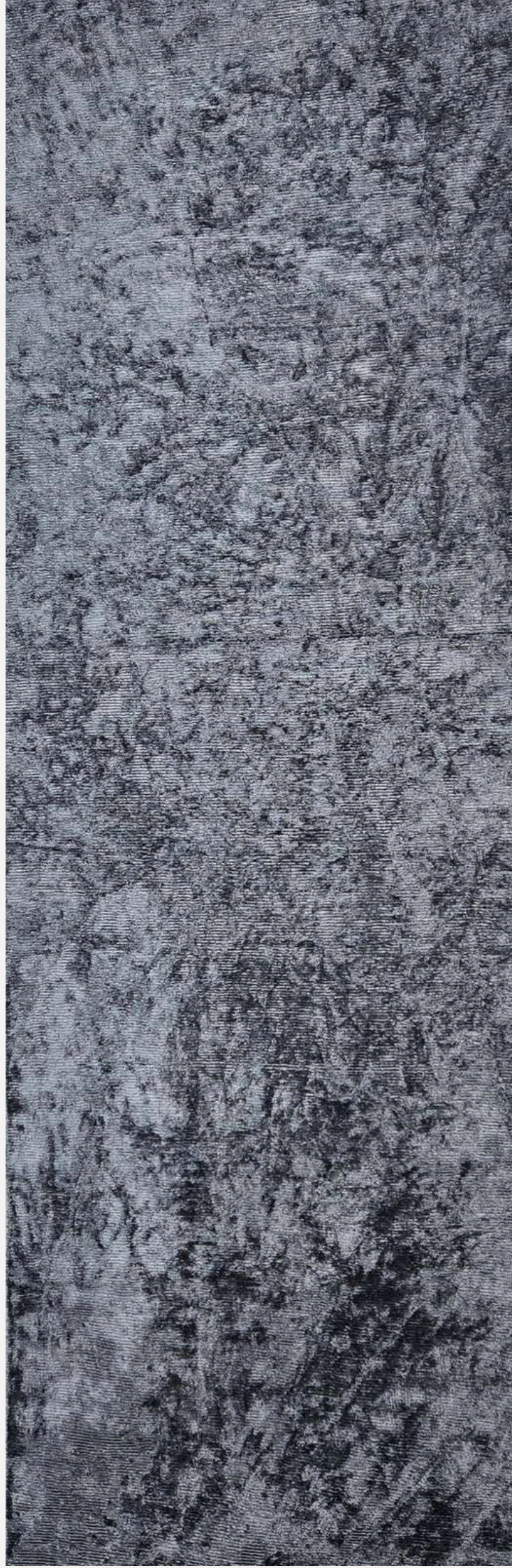
Silver Quietude

PER YARD: \$200.00

UZSV-014. 10.5 Y

16.5 INCHES WIDE

Layered tones of ash, silver, and soft charcoal drift across the surface like mist over stone, creating a calm, contemplative presence. Subtle variations in pile and sheen give the textile a living depth—cool, grounding, and serene—inviting stillness and reflection through its understated, meditative texture.



Radiant Pathways

PER YARD: \$225.00
UZSV-015. 10.5 Y
17 INCHES WIDE

Bold chevrons and flowing bands of rose, marigold, forest green, charcoal, and sand rise and converge like a woven sunrise, creating a sense of movement and uplift. The texture feels plush yet grounded, with shifting tones that catch the light softly, evoking warmth, vitality, and a quiet confidence rooted in balance and forward motion.



Midnight Current

PER YARD: \$200.00

UZSV-016. 11.5 Y

15 INCHES WIDE

A deep, inky blue field ripples with soft tonal variations and subtle metallic flecks, creating the sensation of moonlight moving across water at night. The texture feels velvety and fluid, grounding yet luminous, evoking calm, introspection, and a quiet sense of depth and continuity.



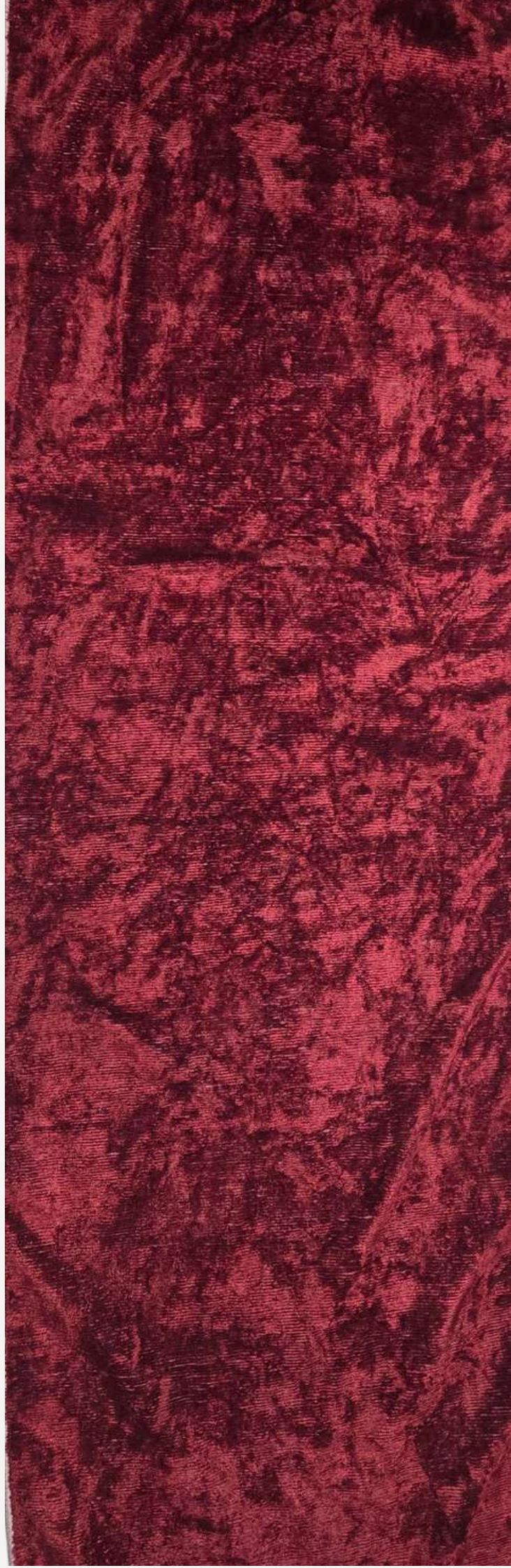
Garnet Field

PER YARD: \$200.00

UZSV-017. 10.5 Y

15 INCHES WIDE

A saturated field of warm crimson and ember-red tones flows in soft, organic variations, creating a rich, glowing surface that feels both grounding and alive. The plush, velvety texture invites touch, evoking warmth, depth, and the quiet intensity of smoldering fire or sun-warmed earth at dusk.



Stonewash Field

PER YARD: \$200.00
UZSV-018. 10 Y
14.5 INCHES WIDE

Softly striated and quietly tonal, this textile evokes weathered limestone and sun-worn earth, with subtle shifts in beige, ash, and warm sand creating a sense of depth and stillness. The surface feels grounded and meditative—an understated canvas that brings balance, warmth, and a tactile calm to the space without demanding attention.





Silk Yardage

SOFT, FLUID SILK WITH A NATURAL LUSTER, THIS YARDAGE MOVES EFFORTLESSLY AND CATCHES THE LIGHT WITH EVERY FOLD. A VERSATILE TEXTILE PERFECT FOR REFINED INTERIOR ACCENTS AND LIGHT UPHOLSTERY.

Midnight Talismans

PER YARD: \$185.00

UZSI-001. 21Y

25.5 INCHES WIDE.

A rhythmic dance of ivory, coral, and indigo motifs drifts across a charcoal silk ground, evoking ancient symbols, desert winds, and twilight rituals. The soft ikat geometry carries a quiet mysticism—both grounded and ethereal—like a story woven from dusk and memory.



Midnight Caravan

PER YARD: \$185.00

UZSI-002. 19Y

16.5 INCHES WIDE.

This silk yardage ripples with jewel-toned ikat waves and talismanic motifs, evoking a twilight journey across desert and dreamscape. Deep charcoal grounds flashes of magenta, saffron, and sky blue, creating a fabric that feels both nomadic and electric, ancient and alive.



Desert Phoenix

PER YARD: \$185.00

UZSI-003. 10.5Y

17 INCHES WIDE.

Soft sand, sky blue, and sun-baked terracotta rise in bold, symmetrical forms that feel both ancient and alive. This silk yardage carries the spirit of desert horizons and migrating birds—grounded, luminous, and quietly powerful, as if woven from wind, clay, and light.



Indigo Mirage

PER YARD: \$185.00
UZSI-004. 11.25Y
24 INCHES WIDE.

Soft indigo and charcoal tones ripple across this silk yardage in a rhythmic ikat pattern, evoking shifting horizons and twilight skies. Serene yet graphic, it carries a quiet, modern elegance—perfect for statement drapery, upholstery, or bespoke fashion pieces with a soulful edge.



Indigo Tide

PER YARD: \$185.00

UZSI-005. 10Y

25.75 INCHES WIDE.

This silk yardage unfolds in layered indigo, slate, and soft ivory, forming mirrored flame and chevron motifs that feel both celestial and grounded. Its gentle ikat blur evokes drifting clouds and twilight horizons, offering a quietly dramatic textile for refined garments, flowing drapery, or soulful interiors.



Golden Halo

PER YARD: \$160.00
UZSI-006. 16Y
25.75 INCHES WIDE.

A striking study in balance and contrast, this silk yardage features bold charcoal and ivory forms anchored by soft golden halos, evoking quiet radiance against a misted ground. Hand-dyed in an ikat tradition, its rhythmic symmetry and earthy elegance bring a grounded yet luminous presence to any interior or design vision.



Desert Drift

PER YARD: \$160.00

UZSI-007. 21Y

25.5 INCHES WIDE.

Soft ivory ground and smoky charcoal motifs are warmed by subtle ochre accents, creating a rhythmic ikat pattern that feels both grounded and airy. This silk yardage carries a quiet desert elegance—perfect for drapery, upholstery, or statement garments that call for understated drama and soulful texture.



Gilded Dawn

PER YARD: \$200.00
UZSI-008. 11Y
20 INCHES WIDE.

A luminous field of molten gold, this silk yardage shimmers with quiet opulence and fluid warmth. Its softly glowing surface evokes early morning light over desert dunes, offering a timeless foundation for elegant drapery, couture garments, or serene interior accents.



Olive Temple

PER YARD: \$200.00

UZSI-009. 11Y

20 INCHES WIDE

A luminous silk yardage in a rare green-gold hue, evoking ancient sanctuaries, sunlit stone, and quiet ritual. Its softly reflective surface carries a grounding elegance—both ceremonial and modern—designed to drape, glow, and endure as a timeless foundation textile.



Smoked Plum

PER YARD: \$200.00

UZSI-010. 11Y

20 INCHES WIDE

Richly moody silk yardage washed in deep plum, espresso, and smoky mauve undertones, this textile shifts subtly with the light like velvet dusk. Its liquid sheen and atmospheric depth evoke quiet luxury —perfect for dramatic drapery, eveningwear, or statement upholstery with a sensual, modern edge.



Crimson Arrow

PER YARD: \$185.00

UZSI-011. 10.5Y

17 INCHES WIDE

Bold and rhythmic, Crimson Arrow Silk features graphic ikat diamonds and cascading stripes in garnet, saffron, charcoal, and parchment, evoking the movement of ceremonial banners and ancient pathways. Its striking symmetry and warm, earthy palette make it a statement textile for dramatic drapery, upholstery, or bespoke design.



Marigold Ember

PER YARD: \$185.00

UZSI-012. 11Y

16.75 INCHES WIDE

A vibrant ceremonial ikat rendered in saturated coral and marigold tones, punctuated by deep forest medallions and charcoal graphic accents. The composition carries a rhythmic, flame-like movement characteristic of Central Asian resist traditions, offering both visual energy and cultural depth. Best suited for statement upholstery, accent pillows, or layered textile installations.



Saffron Eclipse

PER YARD: \$185.00

UZSI-013. 10.5Y

16.5 INCHES WIDE.

Deep charcoal and parchment tones are pierced by glowing saffron-orange orbs, creating a striking celestial rhythm across this silk. Mysterious and grounding, it feels like an eclipse captured in textile form.



Royal Bazaar

PER YARD: \$185.00

UZSI-014. 9.5Y

17 INCHES WIDE.

A jewel-toned ikat of garnet, saffron, teal, and midnight plum, Royal Bazaar Silk evokes the opulence of ancient marketplaces and ceremonial processions, where color, craft, and culture converged in radiant harmony.



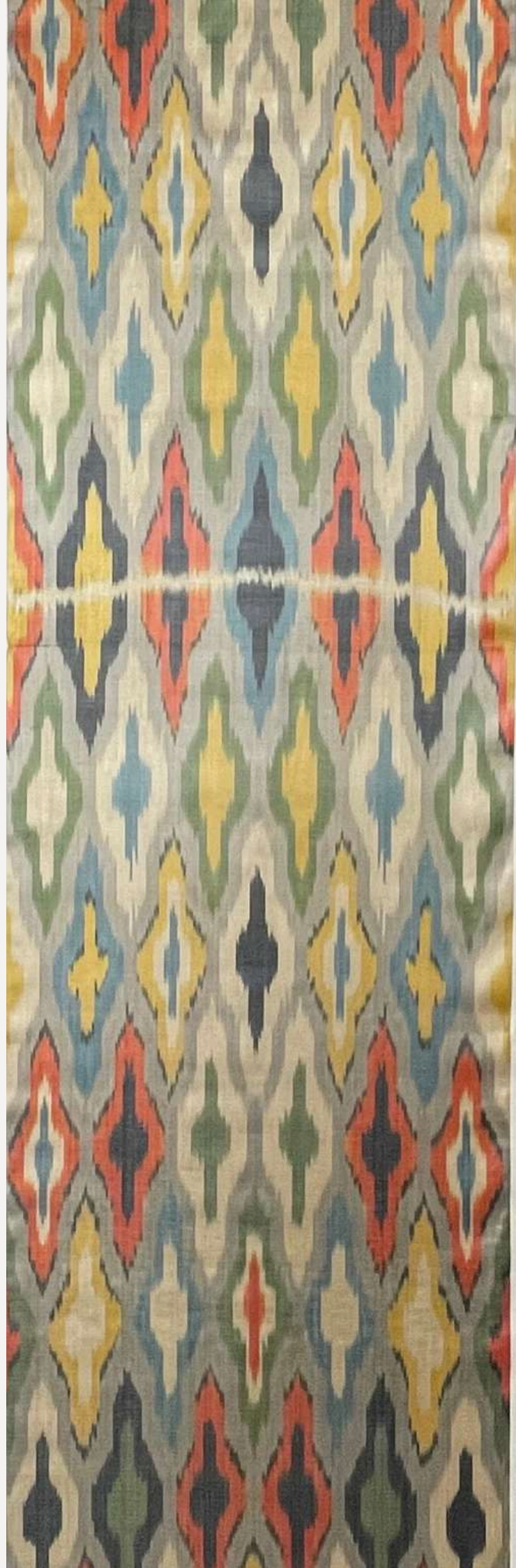
Nomad Garden

PER YARD: \$185.00

UZSI-015. 11Y

16.5 INCHES WIDE.

Soft ikat geometry with a painterly palette of sage, marigold, sky blue, and ember red, evoking a cultivated oasis along ancient trade routes. Earthy yet luminous, this silk yardage brings a grounded elegance and worldly romance to drapery, upholstery, or bespoke textile art.



Azure Mirage

PER YARD: \$185.00

UZSI-016. 11.5Y

16.5 INCHES WIDE.

Inky black and parchment ivory with luminous blue, forming a bold ikat that feels both architectural and fluid. The pattern evokes desert horizons and sacred geometry, like a mirage shimmering across silk.



Oracle Scroll

PER YARD: \$185.00

UZSI-017. 11Y

16.75 INCHES WIDE.

Deep indigo and earthen plum unfold in sacred symmetry, with vine-like scrolls and glowing seed motifs that feel both ancient and prophetic. This silk carries the quiet poetry of ritual textiles—mysterious, grounding, and rich with symbolic presence.



Plum Atlas

PER YARD: \$185.00

UZSI-018. 12Y

25 INCHES WIDE.

A vertically driven silk ikat with softened plum tones and indigo accents.

Architectural in rhythm yet atmospheric in palette, this textile offers structured patterning suited for upholstery, panels, or grounding soft goods within layered interiors.



Aurelian Medallion

PER YARD: \$185.00

UZSI-019. 9.5Y

25 INCHES WIDE

A jewel-toned silk ikat defined by bold medallion geometry and luminous contrast.

Deep plum grounds are punctuated by lapis and gold motifs, creating a textile that reads both ceremonial and architectural.

Best suited for statement upholstery, feature panels, or interiors where pattern serves as a focal design element.



Saffron Caravan

PER YARD: \$185.00

UZSI-020. 6.5Y

23 INCHES WIDE

A warm, earth-toned silk ikat defined by flowing medallion forms and sun-washed color.

Saffron, clay, and soft turquoise accents create a textile that feels historic yet quietly expressive.

Well suited for upholstery, drapery, or layered interiors where warmth and movement are desired.



Sun Relic

PER YARD: \$185.00

UZSI-021. 11Y

16.5 INCHES WIDE

A radiant silk ikat defined by rhythmic medallions set against a luminous golden ground.

Wine-toned motifs and soft turquoise accents create depth while maintaining a structured visual cadence.

Its strong vertical composition lends itself beautifully to statement upholstery, drapery panels, or architectural interior layering.



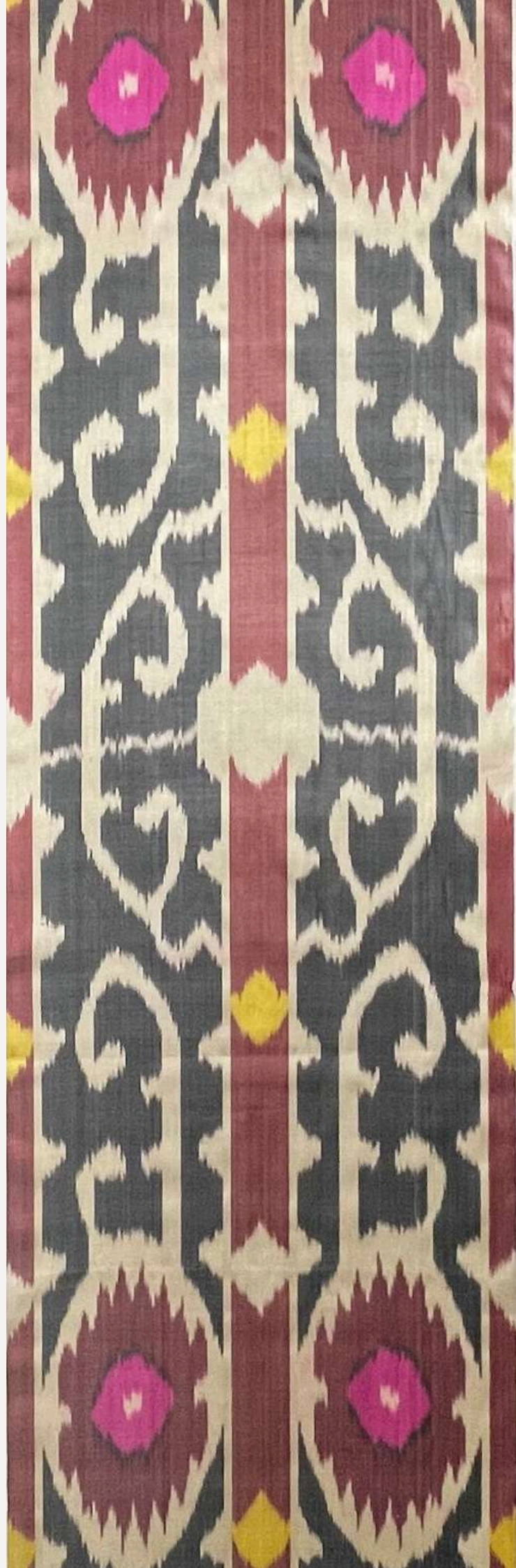
Samarkand Ember

PER YARD: \$185.00

UZSI-022. 10.5Y

16.5 INCHES WIDE.

A refined ikat grounded in deep charcoal and warm rose tones, punctuated by luminous saffron and vivid fuchsia medallions. Its vertical rhythm and scrolling vine motifs create a sense of architectural balance while retaining the softness of hand-dyed movement. This textile offers a sophisticated interplay of tradition and modern restraint, ideal for interiors seeking both structure and soulful color presence.



Verdant Caravan

PER YARD: \$185.00

UZSI-023. 11Y

16.5 INCHES WIDE.

Verdant Caravan carries a rhythmic procession of arrowed motifs and branching forms, rendered in layered greens, claret, and warm ivory. The composition evokes movement across landscape and time, balancing geometric precision with the soft blur of traditional ikat dyeing. Its grounded palette and directional energy lend a cultivated yet spirited presence to both contemporary and heritage-inspired interiors.



Historic Samarkand

PER YARD: \$185.00

UZSI-024. 11 Y

16.75 INCHES WIDE.

A richly layered ikat defined by scrolling celadon forms set against a deep charcoal ground and anchored by a plum central axis. Subtle flashes of citron and violet introduce a jewel-like luminosity that softens the textile's architectural rhythm. The composition lends itself to dramatic upholstery, statement drapery, or interiors seeking depth with a cultivated historic sensibility.



Electric Steppe

PER YARD: \$185.00
UZSI-025. 10Y
16.5 INCHES WIDE.

A vivid ikat defined by pulsating turquoise bands layered with deep earthen forms and flashes of electric chartreuse. The dense vertical rhythm creates a sense of movement and visual vibration, balancing traditional dye techniques with a distinctly modern presence. Ideal for statement upholstery or bold interior installations where color and pattern are intended to energize a space.



Celestial Caravan

PER YARD: \$185.00
UZSI-026. 11.5Y
16.5 INCHES WIDE.

A richly layered ikat where deep earth tones are illuminated by celestial blues, saffron golds, and flashes of amethyst. The rhythmic vertical striations evoke movement — like constellations passing through desert night skies. Bold yet sophisticated, this textile anchors interiors with a sense of heritage, mystery, and luminous depth.



Samarkand Orchard

PER YARD: \$185.00

UZSI-027. 11Y

16.5 INCHES WIDE.

Samarkand Orchard Ikat carries a rhythmic vertical structure softened by organic, fruit-like motifs in garnet, deep forest, and warm ivory. The graphic black linear ground creates architectural balance while allowing the hand-dyed forms to feel grounded yet expressive. This textile holds a quiet ceremonial presence — equally suited to anchoring interiors or adding historic narrative through layered applications.



Shadow Lattice

PER YARD: \$185.00
UZSI-028. 11Y
17 INCHES WIDE

Shadow Lattice presents a rhythmic field of softened diamond forms, rendered in quiet charcoal and warm ivory tones. The restrained palette and blurred ikat edges create a sense of movement that feels both architectural and atmospheric. Its understated geometry offers a grounding foundation, lending depth and calm to interiors that favor subtle pattern over statement color.



Electric Orchid

PER YARD: \$185.00
UZSI-029. 11.5Y
16.75 INCHES WIDE

Electric Orchid pulses with saturated magenta and deep violet, forming a bold, mirrored ikat that feels both ornamental and modern. The high-contrast palette heightens the fluidity of the motif, giving the textile an almost luminous presence in space. This piece commands attention while still carrying the softness and movement inherent to traditional resist-dyed weaving.



Festival Crescent

PER YARD: \$185.00
UZSI-030. 37Y
13.75 INCHES WIDE

Festival Crescent Ikat is defined by bold, rhythmic arcs of crimson, cobalt, and saffron set against a soft ivory ground. The mirrored medallions and layered bands create a sense of celebratory movement, echoing traditional ceremonial textiles while feeling strikingly graphic. Energetic yet balanced, this piece brings a joyful architectural presence to interiors that welcome color with intention.



Terracotta Court

PER YARD: \$185.00
UZSI-031. 10Y
14 INCHES WIDE.

Terracotta Court Ikat features a refined architectural motif rendered in warm earthen red against a softly textured ivory ground. The elongated vertical symmetry and delicate side medallions create a sense of ceremonial balance reminiscent of historic Central Asian interiors. Understated yet commanding, this textile offers quiet structure and warmth to spaces that favor heritage with restraint.



Midnight Talon

PER YARD: \$185.00

UZSI-032. 5.5Y

14 INCHES WIDE

Midnight Talon carries a dramatic rhythm of deep black ground layered with electric blue, garnet, and flashes of saffron. The sweeping forms feel both protective and kinetic, like wings or ancestral symbols moving through shadow and light. This textile brings bold architectural presence while still holding the organic softness of hand-woven ikat tradition.



Nightly Chevron

PER YARD: \$185.00

UZSI-033. 6.25Y

15 INCHES WIDE

A rhythmic field of sharp chevrons moves across the textile like footsteps through desert night, creating a sense of motion and continuity. The high-contrast black and ivory palette lends the piece a modern architectural clarity while still honoring traditional Central Asian resist-dyed technique. Both grounding and graphic, it functions beautifully as a foundational textile that anchors layered interiors with quiet strength.



Cypress Feather

PER YARD: \$185.00

UZSI-034. 7.5Y

14 INCHES WIDE

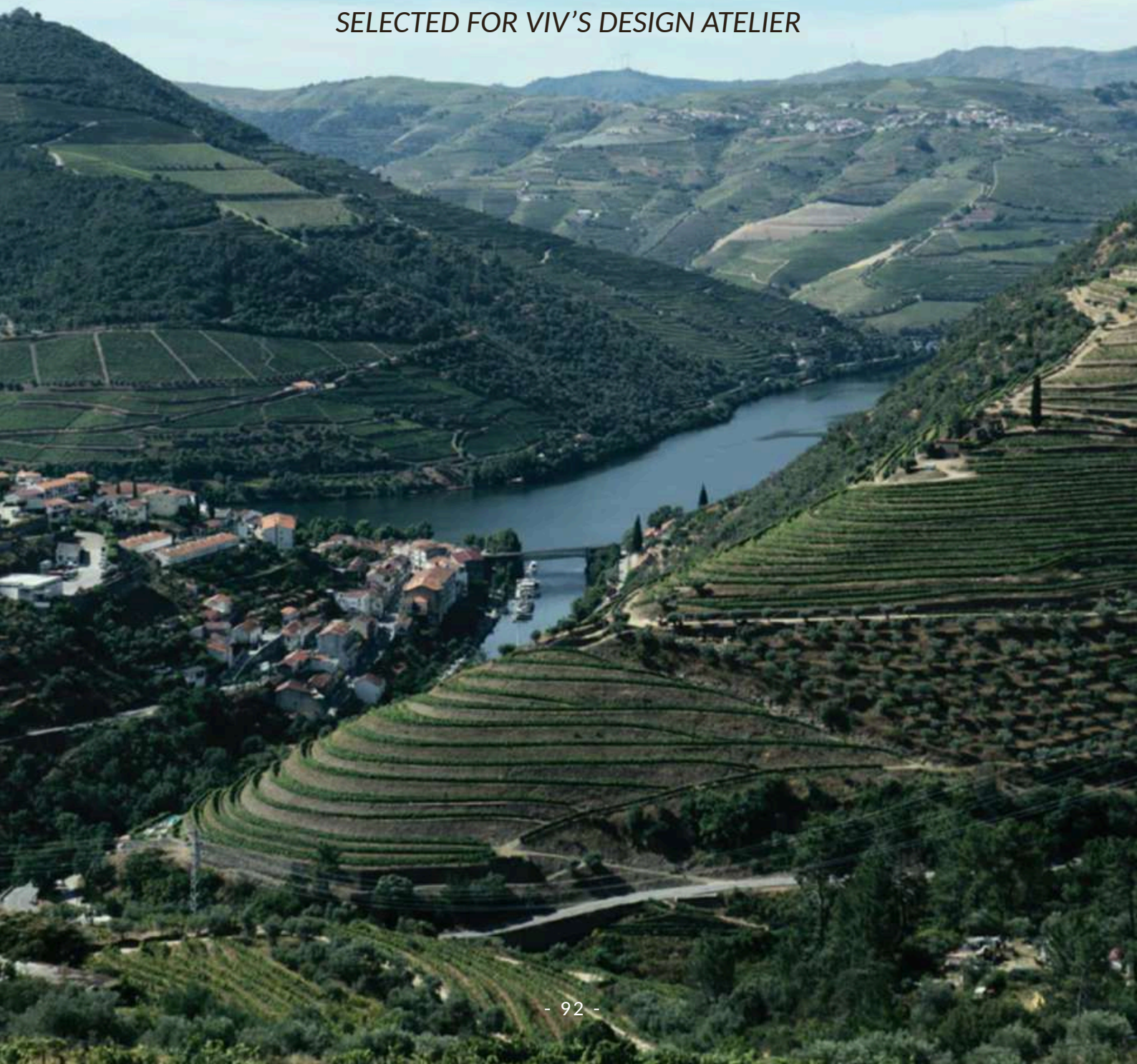
Elongated feather-like forms rise rhythmically in teal and cream, punctuated by slender crimson stems that add vertical emphasis. The composition feels both botanical and symbolic, suggesting growth, direction, and quiet movement. This textile offers a refined balance of softness and structure, suited for layered, atmospheric interiors.



Costa Nova

BORN ALONG THE PORTUGUESE COAST, COSTA NOVA WEAVES HERITAGE STONEWARE AND MODERN ELEGANCE INTO PIECES THAT CELEBRATE GATHERING, BEAUTY, AND THE QUIET ART OF LIVING WELL.

SELECTED FOR VIV'S DESIGN ATELIER



A still life composition featuring a lit candle, a bowl of pomegranates and grapes, and wine glasses on a patterned tablecloth. The scene is set on a table with a colorful, patterned tablecloth. In the center, a lit candle in a dark holder casts a warm glow. In the foreground, a white ceramic bowl is filled with several ripe, red pomegranates and a bunch of dark purple grapes. To the left and right, wine glasses filled with red wine are visible. The background is softly blurred, showing more of the table setting and a festive red and white floral arrangement.

Stacked Organic Collection

BY COSTA NOVA · CURATED BY VIV

A STUDY IN SCULPTURAL SIMPLICITY AND TACTILE REFINEMENT, THE STACKED ORGANIC COLLECTION BY COSTA NOVA PAIRS GENTLY ORGANIC SILHOUETTES WITH HAND-FINISHED EXPOSED RIMS AND VELVETY MATTE GLAZES. CRAFTED FROM SUSTAINABLE ECO GRES® STONEWARE IN PORTUGAL.

ECOGRES® (ECOGRES) IS A REGISTERED TRADEMARK BELONGING TO COSTA NOVA. PRODUCTS UNDER THIS LABEL ARE GUARANTEED TO BE MADE OF NON-HAZARDOUS RECYCLED MATERIALS, DERIVED FROM CERAMIC SURPLUS AND OTHER ADDITIVES. A NEW RAW MATERIAL, COMPLETELY ECO-FRIENDLY.



Sable Blanc



OVAL BAKER

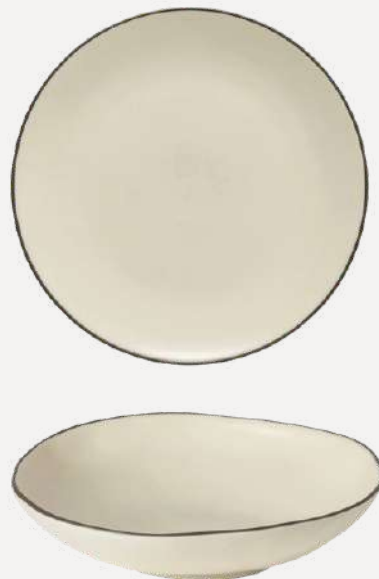
small 10"
large 12"



WINE GLASS 8 FL OZ



OVAL PLATE 8"



SOUP/PASTA BOWL 10"

Fine stoneware pieces are highly resistant to thermal shock, withstanding variations between -20°C and 250°C (0°F to 500°F).

Sable Blanc



MUG



DINNER PLATE 10"



SALAD/DESSERT BOWL 8"



SERVING BOWL 14"

SOUP/CEREAL BOWL

Fine stoneware pieces are highly resistant to thermal shock, withstanding variations between -20°C and 250°C (0°F to 500°F).



Sky Blue



MUG

5 1/2" x 4" H3"



SERVING BOWL

14 3/8" x 14 1/8" H2 5/8"



SOUP/PASTA BOWL

D10 1/2" H1 1/8"



OVAL PLATE

8" x 6 1/4" H1"

Fine stoneware pieces are highly resistant to thermal shock, withstanding variations between -20°C and 250°C (0°F to 500°F).

Cremini Beige



DINNER PLATE
D10 1/2" H1 1/8"



SALAD/DESSERT PLATE
D8 1/2" H1 1/8"



OVAL PLATE
8" x 6 1/4" H1"




SOUP/PASTA BOWL
9 1/4" x 9" H2 1/8"

Fine stoneware pieces are highly resistant to thermal shock, withstanding variations between -20°C and 250°C (0°F to 500°F).

Marrakesh Collection



BY COSTA NOVA · CURATED BY VIV



BATHED IN DESERT HUES AND GARDEN GREENS, THE MARRAKESH COLLECTION PAIRS FLORAL WAVE FORMS, SPECKLED REACTIVE GLAZES, AND SANDY UNGLAZED TEXTURES TO EVOKE THE WARMTH, COLOR, AND TACTILE POETRY OF MOROCCAN MARKETS.

DESIGNED BY FRENCH FLORAL ARTIST CHRISTIAN TORTU, THE MARRAKESH COLLECTION HARMONIOUSLY BLENDS SUSTAINABLE CRAFTSMANSHIP, NATURE'S ESSENCE, AND MOROCCAN MYSTIQUE. INSPIRED BY THE ENCHANTMENT OF THE MAJORELLE GARDENS, THE COLLECTION'S DELICATE FLORAL FORMS INVITE DINERS ON A SENSORY JOURNEY.

Sable Blanc



SALAD / PASTA PLATE 9"



COVERED CASSEROLE - SMALL
10503



COVERED CASSEROLE
10504



MUG

Appetizer Plates



EUCALYPTUS GREEN 7"



SABLE BLANC 7"



CUMIN YELLOW 7"

Salad / Dessert Plate



EUCALYPTUS GREEN 9"



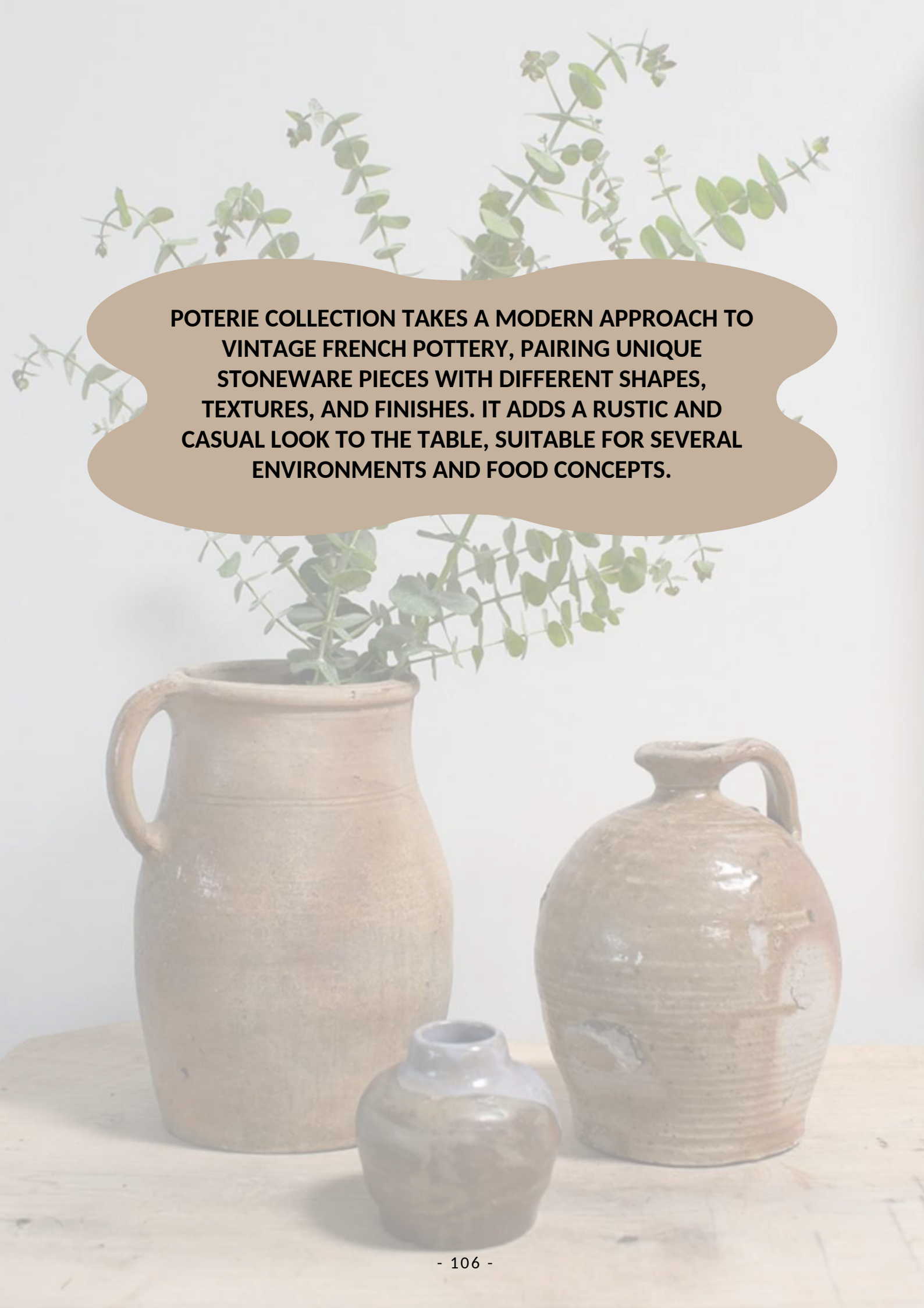
SABLE BLANC 9"



Poterie Collection



BY COSTA NOVA · CURATED BY VIV

The image features three pieces of rustic stoneware pottery arranged on a light-colored wooden surface. On the left is a tall, cylindrical jug with a single handle and a slightly flared rim, containing a sprig of greenery. In the center foreground is a small, squat, rounded vessel with a narrow neck. On the right is a rounded, bulbous jug with a handle and a textured, ribbed surface. The background is a plain, light-colored wall with more greenery visible behind the text area.

POTERIE COLLECTION TAKES A MODERN APPROACH TO VINTAGE FRENCH POTTERY, PAIRING UNIQUE STONEWARE PIECES WITH DIFFERENT SHAPES, TEXTURES, AND FINISHES. IT ADDS A RUSTIC AND CASUAL LOOK TO THE TABLE, SUITABLE FOR SEVERAL ENVIRONMENTS AND FOOD CONCEPTS.

Mocha



SERVING BOWL 10"



PITCHER 33 FL OZ



DIPPING BOWL 4"



SERVING BOWL 14"

Fine stoneware pieces are highly resistant to thermal shock, withstanding variations between -20°C and 250°C (0°F to 500°F).

Caramel-Latte



PITCHER 33 FL OZ



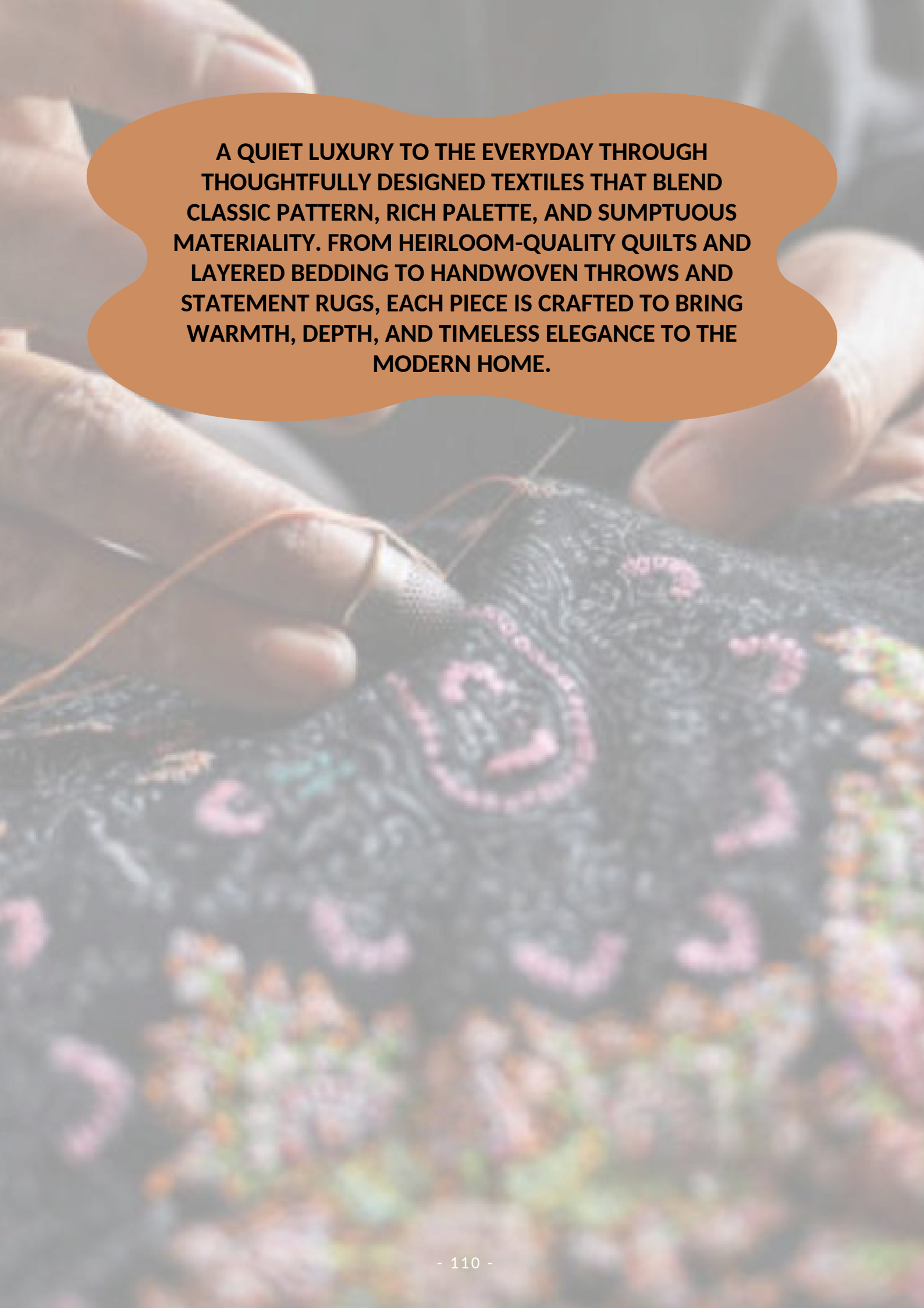
Fine stoneware pieces are highly resistant to thermal shock, withstanding variations between -20°C and 250°C (0°F to 500°F).

Amity Home

Luxury Bedding



BY AMITY HOME · CURATED BY VIV



**A QUIET LUXURY TO THE EVERYDAY THROUGH
THOUGHTFULLY DESIGNED TEXTILES THAT BLEND
CLASSIC PATTERN, RICH PALETTE, AND SUMPTUOUS
MATERIALITY. FROM HEIRLOOM-QUALITY QUILTS AND
LAYERED BEDDING TO HANDWOVEN THROWS AND
STATEMENT RUGS, EACH PIECE IS CRAFTED TO BRING
WARMTH, DEPTH, AND TIMELESS ELEGANCE TO THE
MODERN HOME.**

Damara Linen

Sheet Sets Include:
1 flat, 1 fitted, & 2 pillow cases



- ● ● Queen:
 - Flat: 90 x 106"
 - Fitted: 60 x 80 x 15"
 - Pillowcases: 20 x 30"
- ● ● King:
 - Flat: 106 x 106"
 - Fitted: 78 x 80 x 15"
 - Pillowcases: 20x40
- ● ● CA King:
 - Flat: 108 x 105"
 - Fitted: 72 x 84 x 15"
 - Pillowcases: 20x40"

Kith Linen

Sheet Sets Include:
1 flat, 1 fitted, & 2 pillow cases



- ● ● Queen:
 - Flat: 90 x 106"
 - Fitted: 60 x 80 x 15"
 - Pillowcases: 20 x 30"
- ● ● King:
 - Flat: 106 x 106"
 - Fitted: 78 x 80 x 15"
 - Pillowcases: 20x40
- CA King:
 - Flat: 108 x 105"
 - Fitted: 72 x 84 x 15"
 - Pillowcases: 20x40"

Tyne Linen

Sheet Sets Include:
1 flat, 1 fitted, & 2 pillow cases



Queen:

- Flat: 90 x 106"
- Fitted: 60 x 80 x 15"
- Pillowcases: 20 x 30"

King:

- Flat: 106 x 106"
- Fitted: 78 x 80 x 15"
- Pillowcases: 20x40

Murano Cotton

Sheet Sets Include:
1 flat, 1 fitted, & 2 pillow cases



- ● Queen:
 - Flat: 90 x 106"
 - Fitted: 60 x 80 x 15"
 - Pillowcases: 20 x 30"
- ● King:
 - Flat: 106 x 106"
 - Fitted: 78 x 80 x 15"
 - Pillowcases: 20x40

Savona Cotton

Sheet Sets Include:
1 flat, 1 fitted, & 2 pillow cases



- ● ● Queen:
- Flat: 90 x 106"
 - Fitted: 60 x 80 x 15"
 - Pillowcases: 20 x 30"

- ● ● King:
- Flat: 106 x 106"
 - Fitted: 78 x 80 x 15"
 - Pillowcases: 20x40

- ● CA King:
- Flat: 108 x 105"
 - Fitted: 72 x 84 x 15"
 - Pillowcases: 20x40"

Adley Quilt

100% Cotton



GRANITE
Queen 90 x 95"



Cartwright Quilt

100% Linen



NATURAL / IVORY

Queen 90 x 95" | King 105 x 95"



Sitka Quilt

100% Cotton



SITKA EMBROIDERY

Queen 90 x 95" | King 105 x 95"



Teton Quilt

100% Linen



ASPHALT

Queen 90 x 95" | King 105 x 95"



Victoria Quilt

100% Cotton



WHITE

Queen 90 x 95" | King 105 x 95"



Zion Coverlet



ASPHALT

Queen 96 x 98" | King 114 x 100"



ANDRE JACQUARD

Duvet Cover 100% Cotton



ADRIATIC BLUE

Queen 88 x 96" | King 107 x 96"



Baker Duvet

Duvet Cover 100% Cotton



MINERAL

Queen 88 x 96" | King 107 x 96"



Evol Duvet

Duvet Cover 100% Cotton




IVORY
Queen 88 x 96"



Decorative Pillows

BY AMITY HOME · CURATED BY VIV



THOUGHTFULLY CRAFTED WITH AN EMPHASIS ON NATURAL FIBERS AND UNDERSTATED ELEGANCE, AMITY DECORATIVE PILLOWS BRING SOFTNESS, TEXTURE, AND QUIET REFINEMENT TO ANY SPACE. DESIGNED TO LAYER EFFORTLESSLY, EACH PIECE REFLECTS A BALANCE OF COMFORT AND ELEVATED SIMPLICITY—IDEAL FOR CREATING A WARM, LIVED-IN ENVIRONMENT WITH A REFINED EDGE.

Alcott Pillow

Long Bolster



NATURAL
16" x 27"
100% Cotton



Hector Pillow

X Long Bolster



14" x 42"

Front: 60% Wool, 30% Cotton, 10% Polyester | Back: 100% Linen



Martin Pillow

Grande Bolster



BROWN

22 x 34"

Down alternative fill



Miti Reversible Pillow

X Long Bolster



GREY

16 x 44"

Down alternative fill



Montgomery Pillow

Long Bolster



GREY
16 x 27"



Stewart Pillow

Bolster



BLUE NEUTRAL

15 x 12"

55% Cotton, 45% Jute



Teja Pillow

X Long Bolster



GREY
14 x 42"



Teja Pillow

Pencil Bolster



GREY
4 x 41"



Andre Jacquard Sham



ADRIATIC

Standard 20 x 26" | King 20 x 36" | Euro 26 x 26"



Astrid Sham



ASPHALT
Dutch Euro 31 x 37"



Astrid Sham



NATURAL
Dutch Euro 31 x 37"



Baker Sham



MINERAL

Standard 20 x 26" | King 20 x 36" | Euro 26 x 26" | Dutch Euro 31 x 37"



Cartwright Sham



NATURAL / IVORY

Standard 20 x 26" | King 20 x 36" | Euro 26 x 26" | Dutch Euro 31 x 37"



Kent Linen Sham



LAVENDER / NATURAL

Standard 20 x 26" | King 20 x 36" | Euro 26 x 26"



Rhodes Sham



IVORY
Dutch Euro 31 x 37"



Rhodes Sham



PEWTER
Dutch Euro 31 x 37"



Sitka Sham



Standard 20 x 26" | King 20 x 36" | Euro 26 x 26" | Dutch Euro 31 x 37"

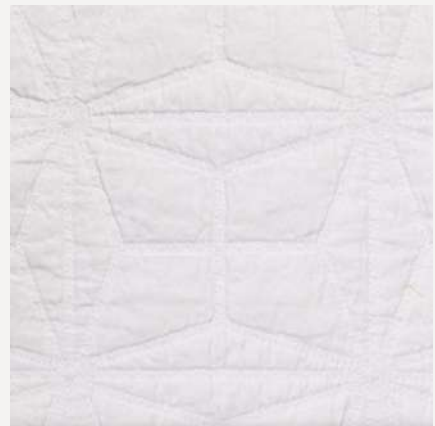


Victoria Sham



WHITE

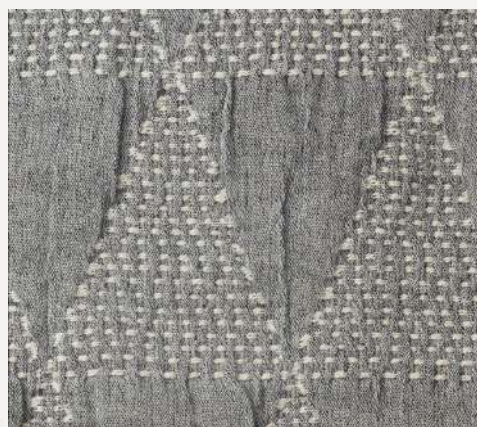
Standard 20 x 26" | King 20 x 36" | Euro 26 x 26"



Zion Sham



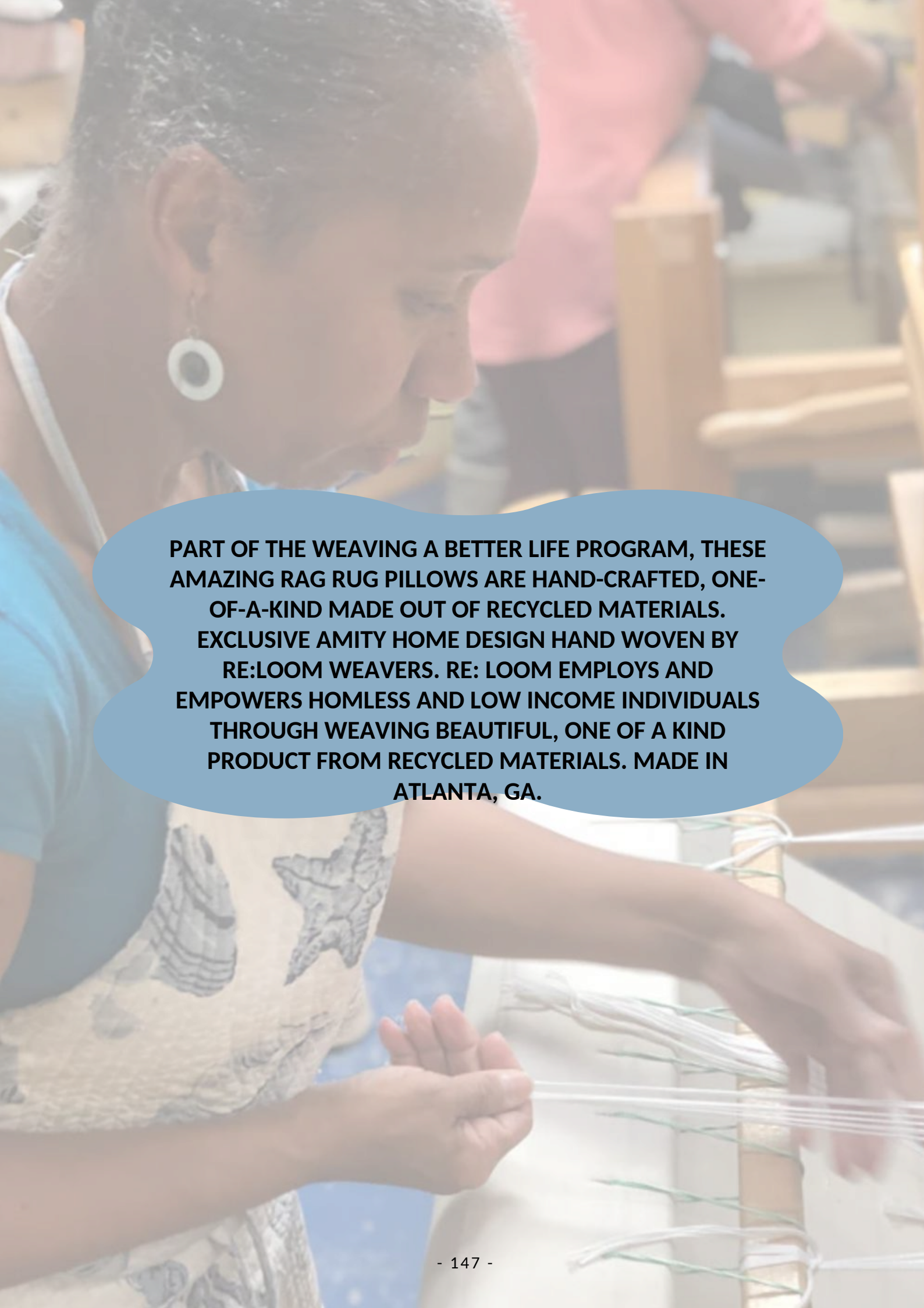
ASPHALT
Standard 20 x 26"





Re:Loom Collection

BY AMITY HOME • CURATED BY VIV

A woman with dark hair pulled back, wearing a light blue t-shirt and a patterned apron, is focused on weaving on a wooden loom. She is wearing large, circular, light-colored earrings. The background is slightly blurred, showing other people and wooden chairs, suggesting a workshop or community center setting. A large, light blue, cloud-like shape is overlaid on the image, containing text.

PART OF THE WEAVING A BETTER LIFE PROGRAM, THESE AMAZING RAG RUG PILLOWS ARE HAND-CRAFTED, ONE-OF-A-KIND MADE OUT OF RECYCLED MATERIALS. EXCLUSIVE AMITY HOME DESIGN HAND WOVEN BY RE:LOOM WEAVERS. RE: LOOM EMPLOYS AND EMPOWERS HOMLESS AND LOW INCOME INDIVIDUALS THROUGH WEAVING BEAUTIFUL, ONE OF A KIND PRODUCT FROM RECYCLED MATERIALS. MADE IN ATLANTA, GA.

Leela Pillow

X Long Bolster



EMERALD
19" x 15" x 11"
Recycled Material



Leela Pillow

X Long Bolster



LAVENDER
19" x 15" x 11"
Recycled Material



Maryam Pillow

X Long Bolster




CORAL
14" x 42"
Recycled Material





Throws Collection

BY AMITY HOME · CURATED BY VIV

A cream-colored, textured knit throw blanket with pom-pom tassels is draped over a wooden chair. The blanket features a ribbed pattern and several large, round, cream-colored pom-poms hanging from the edges. The chair has a wooden backrest and legs. The background is a plain, light color.

**THESE THROWS EMBODY RELAXED LUXURY THROUGH
SOFT, NATURAL MATERIALS AND TIMELESS DESIGN.
LIGHTWEIGHT YET COMFORTING, THEY ARE MADE FOR
EFFORTLESS LAYERING—ADDING WARMTH, TEXTURE,
AND A SENSE OF EASE TO ANY SPACE. EACH PIECE
INVITES A SLOWER, MORE INTENTIONAL WAY OF
LIVING, WHERE COMFORT MEETS QUIET
SOPHISTICATION.**

Anya Throw



IVORY
50 x 60"
50% Wool/ 50% Acrylic



Bati Throw



CHARCOAL, CAMEL, IVORY AND GREY
50 x 60"
80% Cotton/20% Polyester



Egan Throw



SEAGLASS
50 x 60"
100% Cotton



Egan Throw



STONE
50 x 60"
100% Cotton



Laka Throw



MINERAL PLAID
50 x 60"
100% Alpaca



Pillowcase Collection



BY AMITY HOME • CURATED BY VIV



DESIGNED WITH A FOCUS ON NATURAL FIBERS, BREATHABILITY, AND EVERYDAY LUXURY. SOFT TO THE TOUCH AND THOUGHTFULLY CONSTRUCTED, EACH PIECE ENHANCES REST WHILE BRINGING A SUBTLE, REFINED TEXTURE TO THE BEDROOM. ROOTED IN SIMPLICITY AND COMFORT, THESE PILLOWCASES OFFER AN ELEVATED FOUNDATION FOR A CALM, RESTORATIVE SPACE.

Damara Pillowcase



IVORY
Standard 20 x 30"



Damara Pillowcase



NATURAL

Standard 20 x 30" | King 20 x 40"

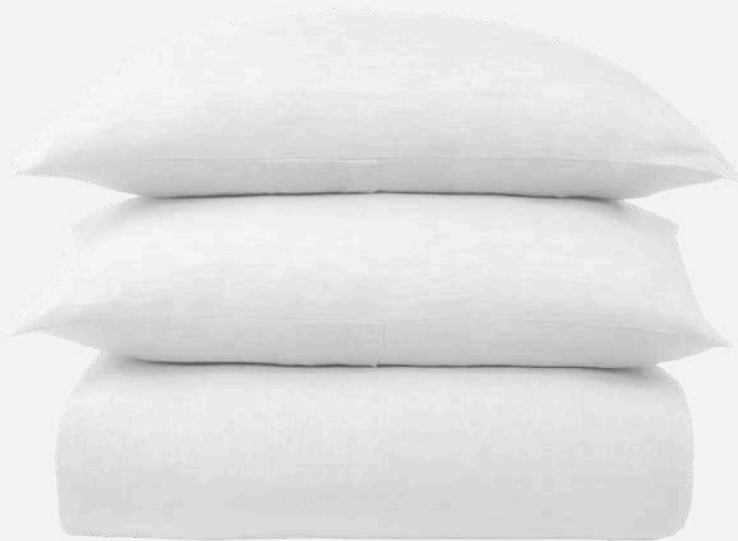


Damara Pillowcase



WHITE

Standard 20 x 30" | King 20 x 40"



Kith Pillowcase



ASPHALT

Standard 20 x 30" | King 20 x 40"



Kith Pillowcase



SADDLE

Standard 20 x 30" | King 20 x 40"



Kith Pillowcase



WHEAT

Standard 20 x 30" | King 20 x 40"



Murano Pillowcase

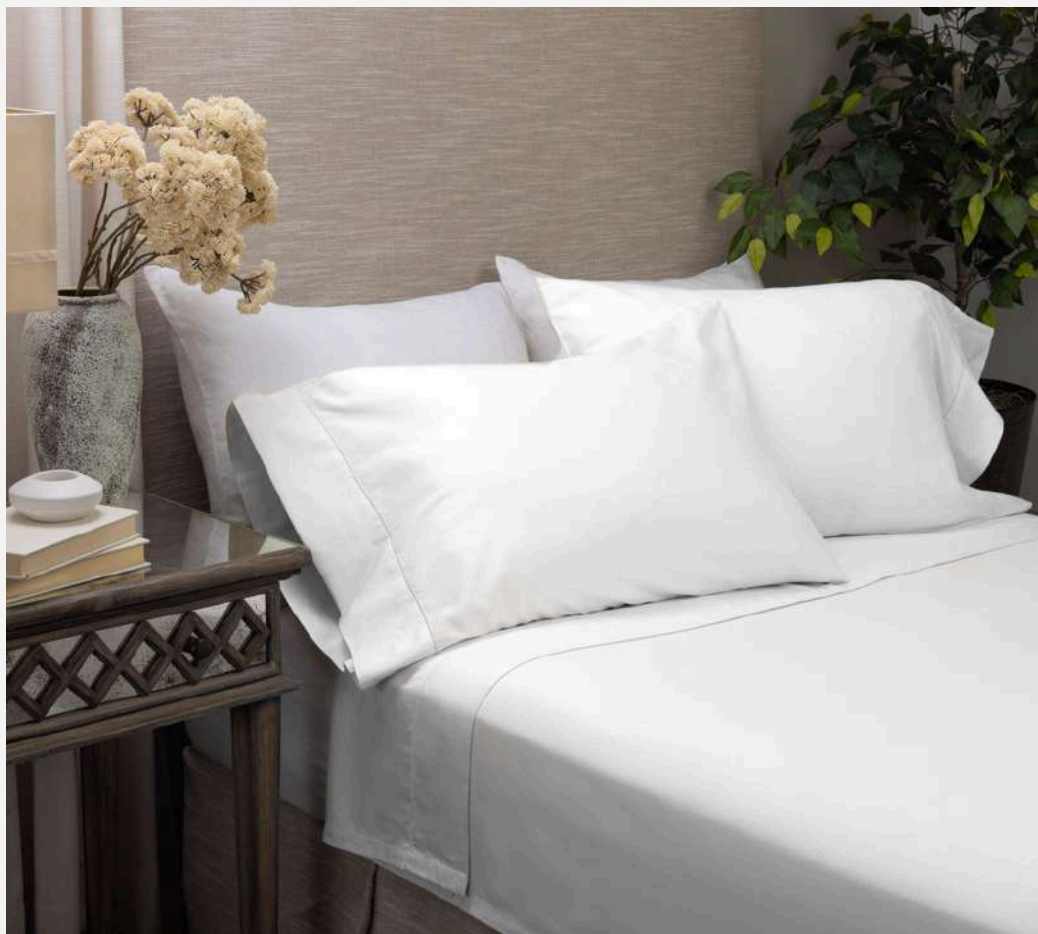


IVORY

Standard 20 x 30" | King 20 x 40"



Murano Pillowcase



WHITE

Standard 20 x 30" | King 20 x 40"



Savona Pillowcase



GREY

Standard 20 x 30" | King 20 x 40"



Savona Pillowcase



OYSTER

Standard 20 x 30" | King 20 x 40"



Damara Bedskirt



IVORY

Queen 60 x 80 x 21" | King 78 x 80 x 21"



Trawick Bedskirt




IVORY
King 78 x 80 x 21"



Contact Us



FOR INQUIRIES, CUSTOM ORDERS, OR TO LEARN MORE ABOUT OUR GOODS, REACH OUT TO US. WE'RE EAGER TO ASSIST YOU!

719-375-1711 

VIV-world.com 

1833 W. Uintah St. Colorado Springs, CO 80904 